

2008 Qualified Remodeler Master Design
Awards: Honorable Mention
2007 WBA Remodeling Awards:
Award Winning Project

2008
Master
Awards **DESIGN**

Project Category:
Finished Basements
“Old Chicago



DEGNAN
DESIGN BUILDERS
INC.





The goal of this project was to create a finished basement space with the atmosphere of an old Chicago pub combined with an industrial modern influence. The clients enjoy entertaining family and friends, One of their dreams was to have a custom-made restaurant booth for snacks or playing cards. Also, our clients had a number of needs to be incorporated into this multipurpose space including:

- Computer and AV workspace
- Home entertainment center with HDTV
- Piano/reading/fireplace
- Informal party/entertainment area
- Game table with reversible top
- Hot tub area and bathroom/changing room with continuous tiled floor and floor drain to accommodate wet guests
- Exercise area with padded workout floor.

All of this needed to fit into a compact footprint of under 1000 feet.



Vivid colors, textures, and material choices were selected to coordinate with the distinct decorative styles of this family, who have traveled, studied, and worked overseas. A mixed-color and mixed-size tile in an offset pattern was chosen to mimic slate.



The clients chose to have us build a custom booth with a two-sided table top—one side contains European memorabilia in the poured epoxy top, while the opposite is a felt-covered game table. The button-tufted upholstery was precisely executed in a pattern sized appropriately for the scale of this large, yet intricate piece.

Counter Clockwise:

Top: Reversible, the table top is set up for a good game of Texas Hold 'em. Note the masonry arch directly above the booth.

Left: The upholstered seats are removable for cleaning and to reveal storage compartments below.

Below: The poured epoxy top of the booth contains European memorabilia.

Right: The booth posts are custom created and routed with copper tops.





Before (left): An oddly designed window layout.

After (below): The old double-window was re-used in the main area where the single window formerly was; a new triple window is unseen behind the frosted glass window to the hot tub area but streams light through to the main area.

Common corrugated steel siding is used on the ceiling of the space. Painstaking planning of the lighting and HVAC layout was necessary to ensure that all the fixtures landed in the flat spot of the metal rather than overlapping a rib. For sound isolation, the ceiling was installed over drywall and resilient channel to reduce the sound between these rooms and the kids' bedrooms above.



Unafraid of unique solutions to avoid costly custom options, a frosted glass door is hung sideways in the wall to create a window between the bar area and the hot tub room. This allows more light from the new triple window into the main part of the basement. It is typically left closed to isolate noise and humidity from the hot tub room, but is opened up while entertaining. A humidistat controlled fan insures that any excess humidity generated by the hot tub is vented out of the home, to protect against condensation damage and mold. A floor drain was installed to keep spa water from making its way to the other parts of this space.



During Construction (left): A double window was removed and opened for a new triple window, during which time a large hot tub was brought in. A new triple window was installed, and the hot tub sits on a platform to take advantage of the back yard view to a neighborhood pond.

After (above): Notice the light streaming in from the left through the new window.



The bathroom doubles as a changing and showering area for friends and family who want to use the whirlpool. The geometric styled, slate tone tile is carried from the bathroom through the bar area to the spa and home gym.

Leading an active lifestyle and being conscious about fitness, our clients needed functional area to use exercise machines and work out. We located a swing arm LCD TV between the exercise area and the whirlpool. This allows the TV to be viewed while working out or while soaking in the spa. The thickly padded specialty flooring makes this home fitness area very comfortable.



Our clients needed a computer workspace that would allow them to edit multiple formats of video and audio, perform daily tasks, and not clutter up the space with components and wires. We accomplished this by selecting cabinetry that was sized to accommodate both existing and future AV components. We planned for cable routing even before the walls were built and installed conduits between the desktop, cabinetry, and the LCD TV. USB hubs were installed in several areas allowing our clients to configure their home exactly to their liking and needs. By locating the sub woofer in the corner cabinet we were able to completely house all the electronic components needed in this area without occupying counter space or adding visual clutter.

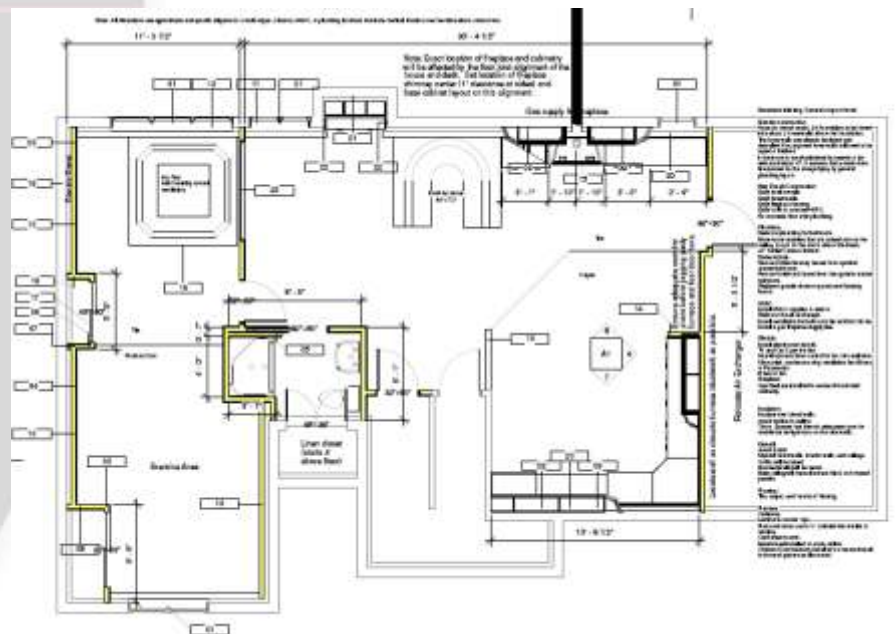


Opposite the AV work area, our clients wanted a reading area with a fireplace. Not pleased with how the usual treatments for gas fireplaces would look in this area, we chose to build this one into the cabinetry itself. By holding the fireplace back from the cabinet line we were able to give the piece a recessed look that was reflected in the countertops. The black flue with square black trims compliments the industrial metal ceiling. By framing the flue with bookcases, corner cabinets, and crown molding, we were able to complete and define the space perfectly.

After studying various opportunities to bring masonry into the space, the decision was made to do more with less. Entering through the main door of the house, you travel a half-flight of stairs and are immediately focused on the Chicago Used Brick feature arch above the custom booth seat. The arch reveals a bold Red Pepper paint which seemingly creates additional depth in this area, while a turn-of-the-century period playbill hang as the feature piece on the wall. A subdued Crocodile green paint below contrasts the other colors.

Final Assessment & Results:

After project completion, our clients soon began putting their new basement addition to task. Both daily living and entertaining are easily accommodated in the new spaces. Both form and function have been executed precisely in this detailed project. Perhaps the only problem our clients may encounter is deciding where to spend their time.



Specifications of Note:

- Tile:** Ceramica Casabella Magma 12x12 and 18x18, in Negro, Ocre & Musgo
- Carpet:** Smooth n' Silky, in Chiffon.
- Fireplace:** Kingsman HBZDV324 with back face, black panel grill kit and eight piece log set.
- Masonry:** Chicago Used Brick
- Bathroom:** Kohler Bancroft toilet and pedestal sink in Almond; Hansgrohe shower head.
- Metal Ceiling:** Menards corrugated steel.
- Cabinetry:** Homecrest, Cambridge door in Maple Toffee
- Workout floor:** Century Martial Arts Supply